

Title: Parents' experiences of their child's return to school following acquired brain injury (ABI): A systematic review of qualitative studies

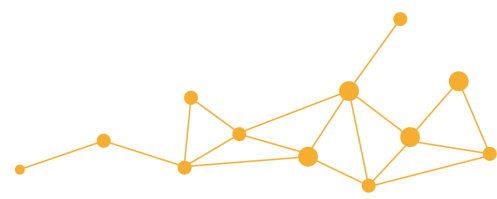
Purpose:

This study examined parents' perspectives on the return to school process and identified common factors contributing to successful school reintegration. Researchers examined published articles on return-to-school transitions between 1980 and 2015.

Key findings:

There were 10 factors that affect successful school integration:

Factors	Description
Environmental	Complexity of ABI, availability of resources/support services, educational/economic status of parents
School	Accommodations, teachers' attitude/knowledge
Parent	<u>Emotions:</u> Frustrated, impatient, angry Exhausted, burning out Fear, worry, doubt about future Relief, reduced stress when school is supportive <u>Expectations:</u> Option to leave some tasks to experts Comprehensive assessment of child Competent, accessible professionals Support for individual situation Follow-up and planning
Child	Psychological, cognitive, and academic changes
Information	Information shared by health and school professionals about educational and support options
Communication	Effective communication between home and school
Collaboration	Effective collaboration between hospital and school, hospital to school transition experience, family involvement
Conflict	Conflict between parents and school
Parent Coping	Managing emotions, communicating with school, adjusting to loss and uncertainty
Construction of new roles and identity	Fostering of independence and self-esteem



Implications:

Communication between school staff, health professionals and families is critical. Children with ABI have better outcomes when there is a unified approach to supporting the student and information is shared across settings. Regardless of the severity of the ABI, medical information about the brain injury and its consequences should be provided to school staff so that they are able to develop appropriate interventions and supports.

Reference:

Andersson, K., Bellon, M., & Walker, R. (2016). Parents' experiences of their child's return to school following acquired brain injury (ABI): A systematic review of qualitative studies. *Brain Injury, 30*(7), 829-838.
doi:10.3109/02699052.2016.1146963

